

# INSTALLATION INSTRUCTIONS WATER FOUNTAINS AND CUSPIDOR



Thank you for selecting the Crane Plumbing Fountain. To insure this product is installed properly, please read these instructions carefully before you begin. This high quality, vitreous china fixture is meant to provide many years of service, but can be damaged by improper handling and/or installation. Be sure your installation conforms to local codes.

## PRE INSTALLATION

Unpack the fountain. Take a moment to check the fixture to make sure there is no damage. Verify that you have all the necessary tools, fittings, and connection hardware to complete the installation.

## 6523 NEU-WATERFALL INSTALLATION

- 1 The fountain is heavy. Provide suitable structural support behind the finished wall for the hanger lag screws.

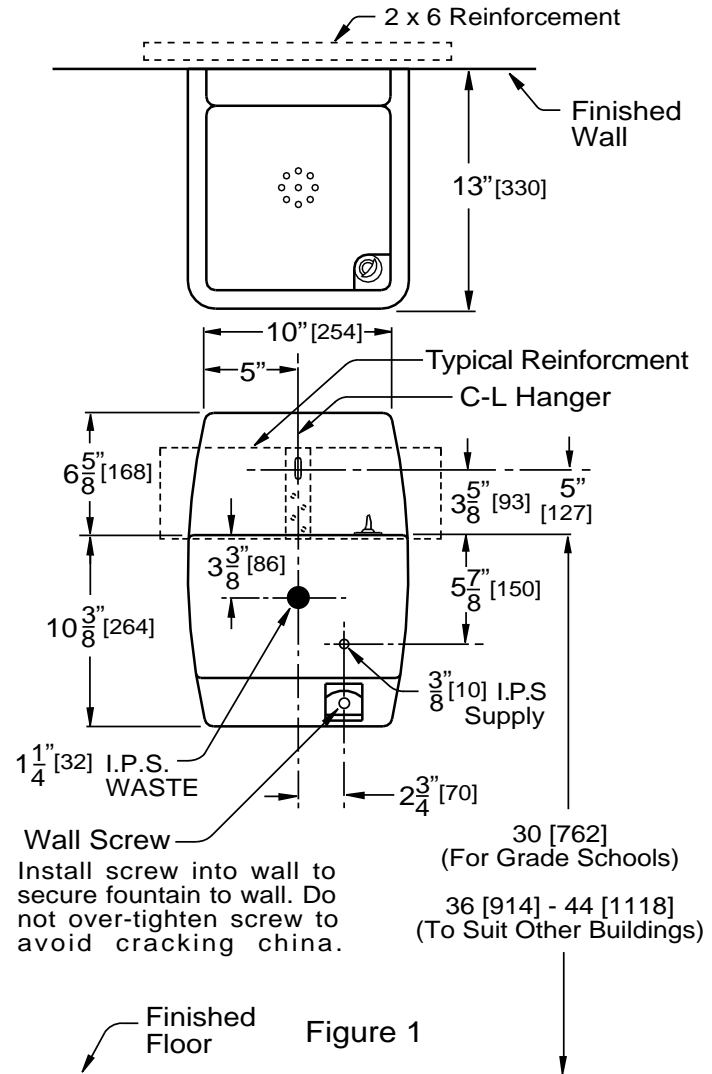
The wall, or whatever material the screws are attached to, must be of sufficient strength to fully support the lavatory.

It may be necessary to install a 2 x 6 board behind the finished wall. Position the board between two studs so the front surface of the board is flush with the front of the studs. The finished wall is then applied over the board.

Study the product diagram of the fountain (Figure 1). The metal hanger (included) is fastened to the reinforcement with a lag screw. The fountain is supported by this hanger as primary support. A wall screw must be installed through the hole in the lower section of the fountain to secure it to the wall.

- 2 Note on the diagram the location of water supply and waste pipe. These must be installed before the fountain is placed on the hanger.

The fountain bubbler fitting should be installed on the fountain before it is fastened to the wall. Waste assembly with "P" trap is installed on unit. Make water supply and waste connections after fountain has been installed.



## BUBBLER / PUSH BUTTON INSTALLATION

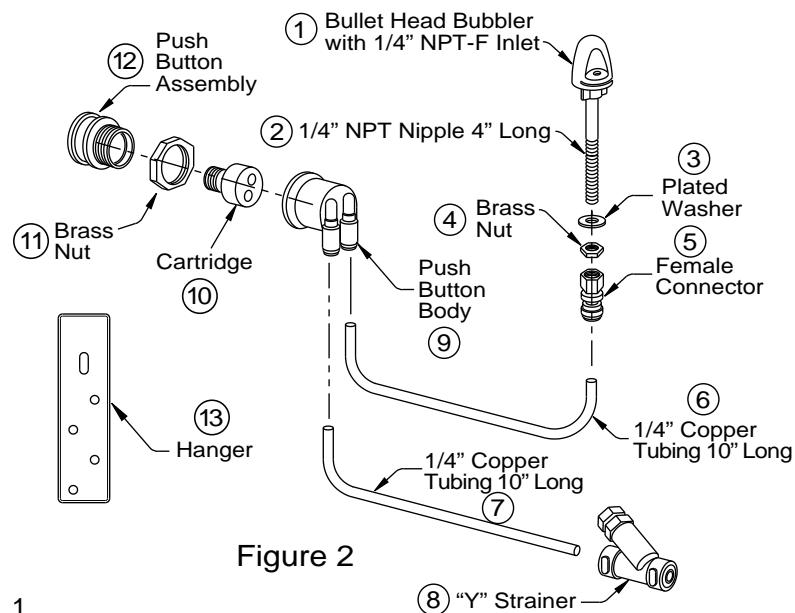
- 1 The Bubbler / Push Button assembly installs as shown in Figure 2. Caution: Do Not overtighten the brass nuts to avoid cracking the china.

Trim copper tubing as required. Water supply connects to the "Y" strainer. This part acts as a pressure regulator for the bubbler assembly.

- 2 The waste "P" Trap assembly is factory installed. Make drain connection to the I.P.S. waste.

Turn on water and check for leaks. Install stainless steel cover plate to cover the access opening.

Caulk along gap between fountain and finished wall to complete the installation.



## 6570 COOLBROOK INSTALLATION

## 6615 COMBINATION INSTALLATION

### PRE INSTALLATION

The Coolbrook fountain may be installed alone, or with the matching cuspidor. Both units must be recessed into the wall. See Figure 3 for size of the openings, and required reinforcement.

Be sure your installation conforms to local codes.

- 1 These fixtures are heavy. Provide suitable structural support behind the finished wall for the mounting screws provided.

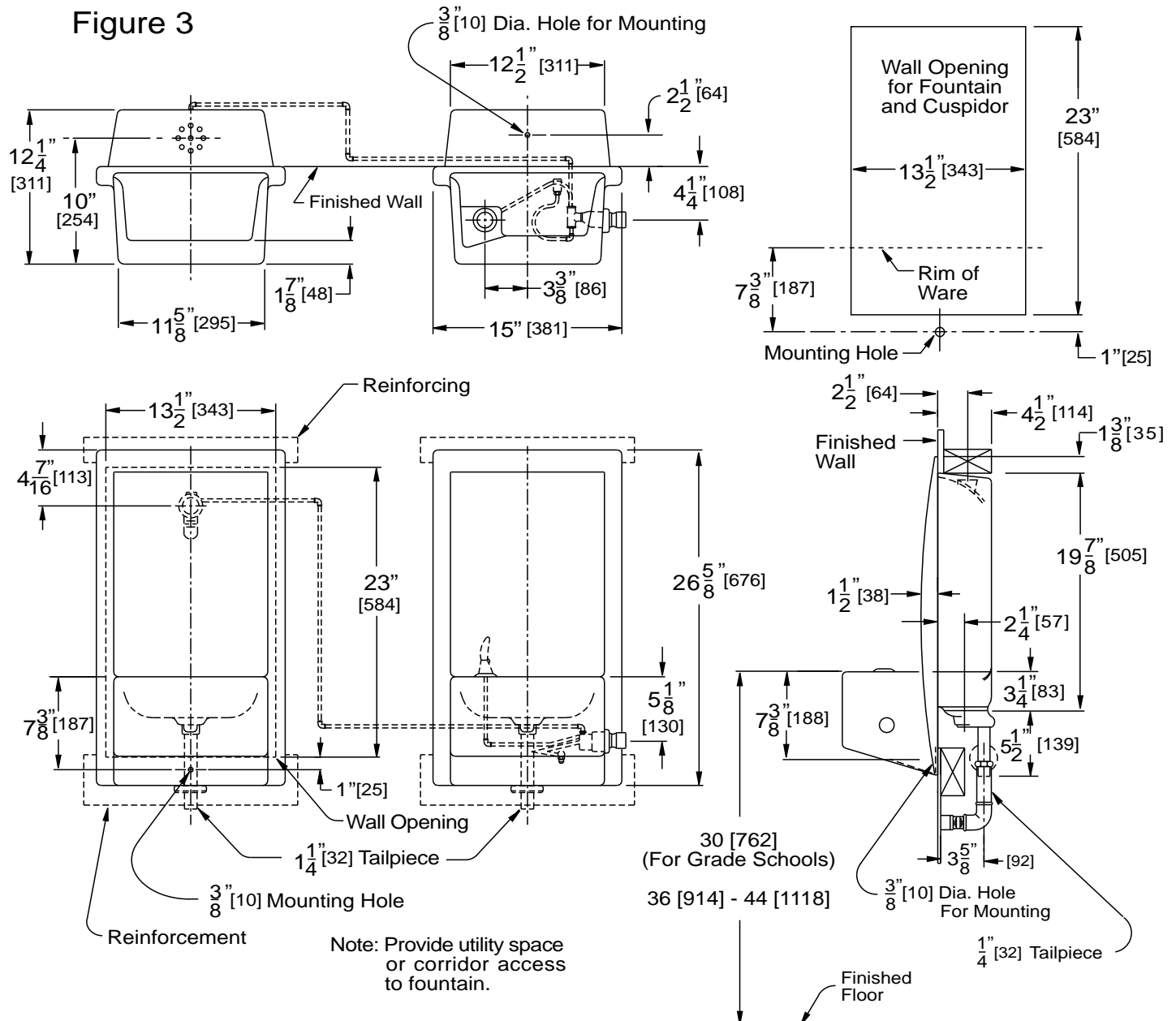
The wall, or whatever structure the assembly is installed into must be of sufficient strength to fully support the fountain and cuspidor.

- 2 Install the opening in the wall for the fountain. Opening must be 23" tall and 13-1/2" wide. See recommended "Rim Height" above the floor. Install at height to suit the application. If installing the matching cuspidor, make an identical opening. Cuspidor location should be the same height above the floor.

- 3 Study the product diagram in Figure 3. Note the location of the reinforcing at the top and bottom of the opening. It may be necessary to install wood reinforcement in these areas to provide a solid attachment surface for the mounting screws.

- 4 Note the location of the water supply and waste lines. These connectoins must be installed before the fixtures are placed in the openings. The units are shipped with the bubbler and drain fittings but these fittings must be installed. Much of the bubbler and push button assembly can be installed before the unit(s) are in place. Final hook up is typically done through access openings in the bottom of the fixtures.

Figure 3



**5** If installing both fountain and cuspidor, a water line to connect the two must be placed before the fixtures are installed. If the back of the wall is open so there is access to the back of the fixtures, the water connection can be made after fixtures are installed.

**6** Waste fitting with 1-1/4" O.D. tailpiece should be installed on fixture before it is installed. Assemble as shown in Figure 4. Tailpiece connects to previously installed waste line. If using "P" Trap only, connect to drain area. Assemble as shown in Figure 4.

**7** The fixture is shipped with the bubbler assembly packed in a cardboard box. Instructions on installing the bubbler / cuspidor assembly are included in the box. Read and follow those instructions. The diagram below should help guide the installation.

**8** Fit fixtures into wall openings. Install mounting lag screws. Make water supply connections and connect waste line. Turn on water and check for leaks. Install stainless steel cover plate.

Caulk any gap along edge of fixture and finished wall to complete the installation.

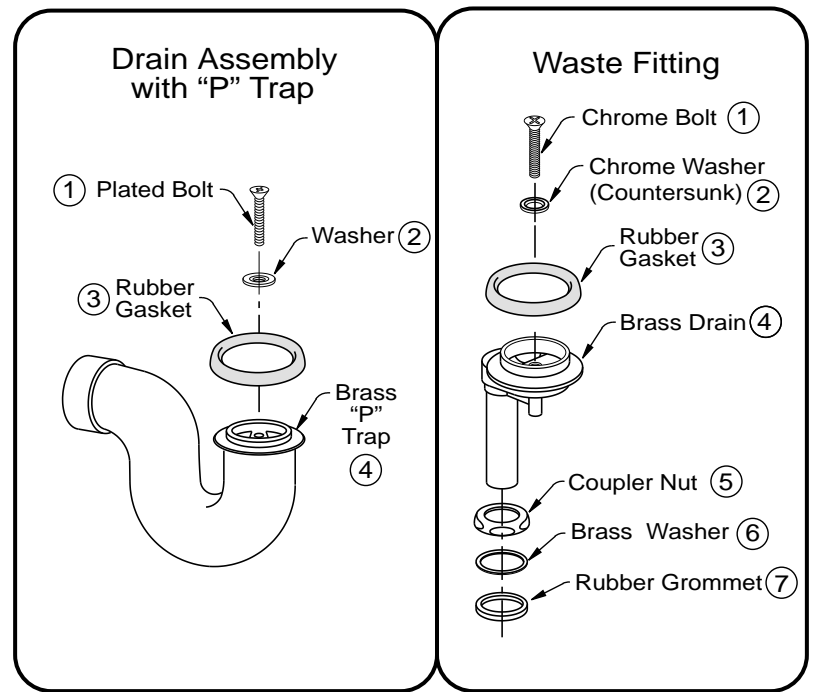
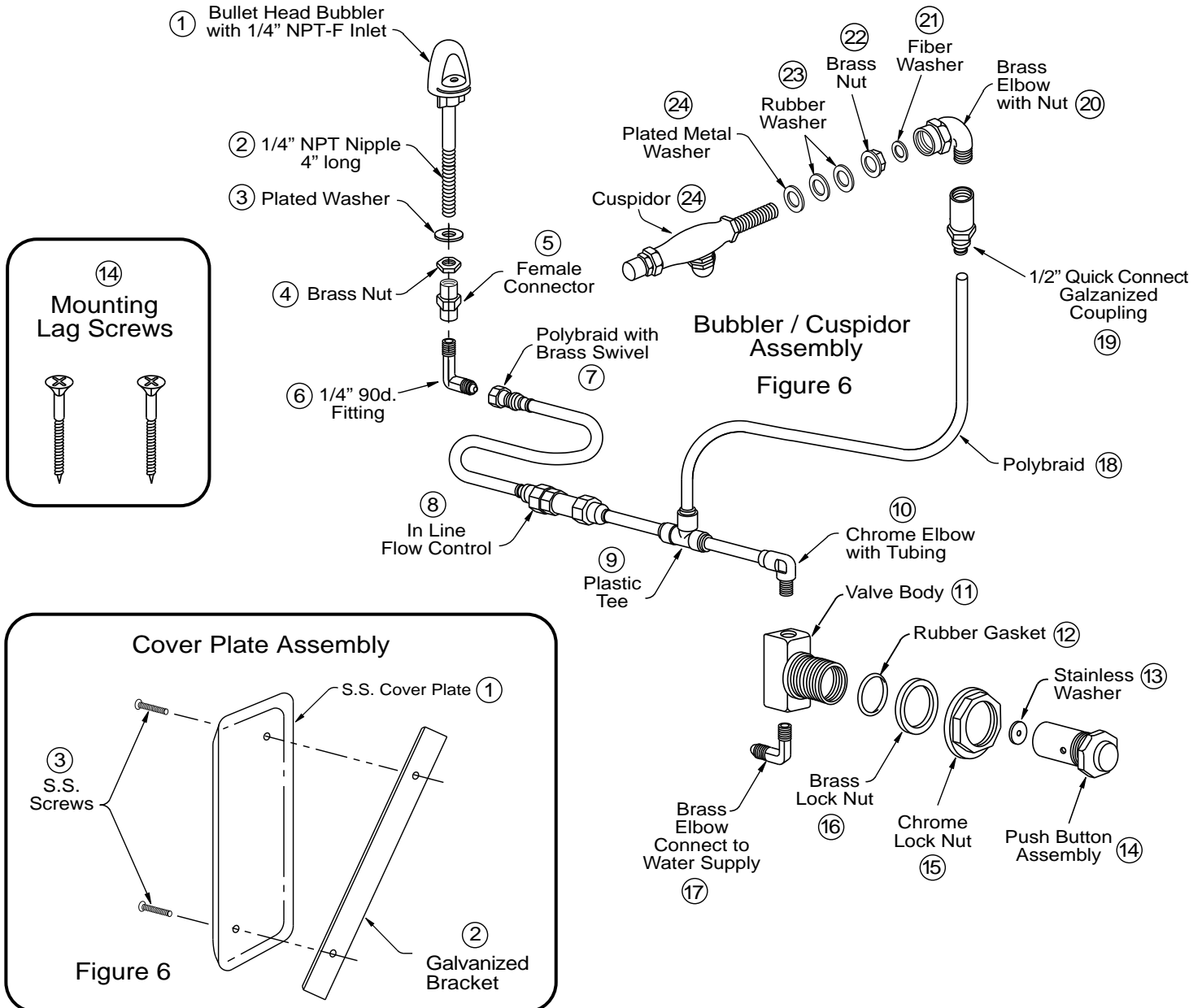


Figure 4



### Packing List 6523 Neu-Waterfall

No:	Qty.	Description
1	1	Purflo Bubbler
2	1	N.P.T. Nipple
3	1	Plated Metal Washer
4	1	Brass Nut
5	1	Female Connector
6	1	Copper Tubing "U"
7	1	Copper Tubing "L"
8	1	Plastic Strainer
9	1	Push Button Body
10	1	Cartridge
11	1	Brass Nut
12	1	Push Button Assembly
13	1	Metal Hanger
14	2	Mounting Screws

### Packing List "P" Trap Assembly

No:	Qty.	Description
1	1	Chrome Bolt
2	1	Chrome Washer
3	1	Rubber Gasket
4	1	Brass "P" Trap

### Packing List Waste Assembly

No:	Qty.	Description
1	1	Chrome Bolt
2	1	Chrome Washer
3	1	Rubber Gasket
4	1	Waste Fitting
5	1	Coupler Nut
6	1	Brass Flat Washer
7	1	Rubber Grommet

### Packing List 6615 Fountain-Cuspidor

No:	Qty.	Description
1	1	Purflo Bubbler
2	1	N.P.T. Nipple
3	1	Plated Metal Washer
4	1	Brass Nut
5	1	Female Connector
6	1	90 Degree Fitting
7	1	Polybraid /w Swivel
8	1	Flow Control
9	1	Plastic Tee
10	1	Chrome Elbow
11	1	Valve Body
12	1	Rubber Gasket
13	1	S.S. Washer
14	1	Push Button Assembly
15	1	Chrome Lock Nut
16	1	Brass Lock Nut
17	1	Brass Elbow
18	1	Polybraid Tubing
19	1	Quick Connect Coupling
20	1	Brass Elbow /w Nut
21	1	Fibre Washer
22	1	Brass Nut
23	2	Rubber Washer
24	1	Plated Metal Washer
25	1	Cuspidor

### Packing List Cover Plate Assembly

No:	Qty.	Description
1	1	S.S. Cover Plate
2	1	Galvanized Bracket
3	2	S.S. Screws

CR/PL 1235 Hartrey Avenue Evanston, IL. 60202

## Limited Five Year Warranty

Subject to the "Exclusions" set forth below, CR/PL promises to the consumer to repair, or at the option of CR/PL, to replace any part of this plumbing product which proves to be defective in workmanship or materials under normal use for five years from the date of purchase. All costs of removal, transportation and reinstallation to obtain warranty service shall be paid by the consumer. During this five year period, CR/PL will provide, subject to the "Exclusions" section set forth below, all parts free of charge, necessary to correct such defects if this plumbing product has been installed and maintained in accordance with written instructions furnished by CR/PL with this plumbing product.

Exclusions: CR/PL PRODUCTS SHALL NOT BE LIABLE FOR INCIDENTAL OR CONSEQUENTIAL DAMAGES, INCLUDING COSTS OF INSTALLATION

OR WATER DAMAGE, OR FOR DAMAGES RESULTING FROM ABUSE OR MISUSE OR FROM FAILURE TO INSTALL OR MAINTAIN THIS PLUMBING PRODUCT IN ACCORDANCE WITH THE WRITTEN INSTRUCTIONS FURNISHED BY CR/PL PRODUCTS. USE OF CLEANING PRODUCTS CONTAINING CALCIUM HYPOCHLORITE (CHLORINE) SHALL CONSTITUTE IMPROPER MAINTENANCE. SOME STATES DO NOT ALLOW THE EXCLUSION OR LIMITATION OF INCIDENTAL OR CONSEQUENTIAL DAMAGES, SO THE ABOVE LIMITATION MAY NOT APPLY TO THE CONSUMER. THE ONLY WARRANTY MADE BY CR/PL PRODUCTS IS SET FORTH ABOVE AND ALL IMPLIED WARRANTIES WHICH MIGHT ARISE, INCLUDING THE IMPLIED WARRANTIES OF MERCHANTABILITY OR FITNESS FOR A

PARTICULAR PURPOSE ARE HEREBY EXCLUDED.

Warranty Service: In order to obtain warranty service or adjustments, contact the builder, dealer or plumber from whom the product was purchased, or the Customer Service Department, CR/PL Products, 201 East Fifth Street, Mansfield, OH 44901 (419/522-4211). In obtaining warranty service, all transportation, shipping and freight charges connected with transporting any part of this plumbing product must be prepaid by the consumer. It is the responsibility of the consumer to establish the warranty period by verifying the original purchase date. A bill of sale, cancelled check or some other appropriate payment record may be kept for this purpose. This warranty gives you specific legal rights. You may also have other rights which vary from state to state.