

**RIGHT WIDTH™  
ELONGATED RIGHT HEIGHT™ TOILET**

**32002**

- Vitreous china
- Wider for added comfort, support and ease of use
- High Performing flush
- Low-consumption (6.0 Lpf/1.6 gpf)
- Wider base for excellent retrofit installation
- Sanitary bar on bowl
- 16-1/2" rim height for accessible applications
- Elongated siphon action jetted bowl
- 2-1/8" Fully-glazed trapway
- Custom fitted Right Width seat with chrome-plated hinges included
- Chrome-plated trip lever
- 3" Flush valve and pilot valve
- 2 bolt caps
- Load tested to 2,000 lbs. - Perfect for Bariatric Applicatons



**31902** Elongated Right Height™ bowl only

**31892** Tank

**Nominal Dimensions:**

743 x 570 x 772mm  
(29-1/4" x 22-7/8" x 30-3/8")

Fixture and seat only, supply by others

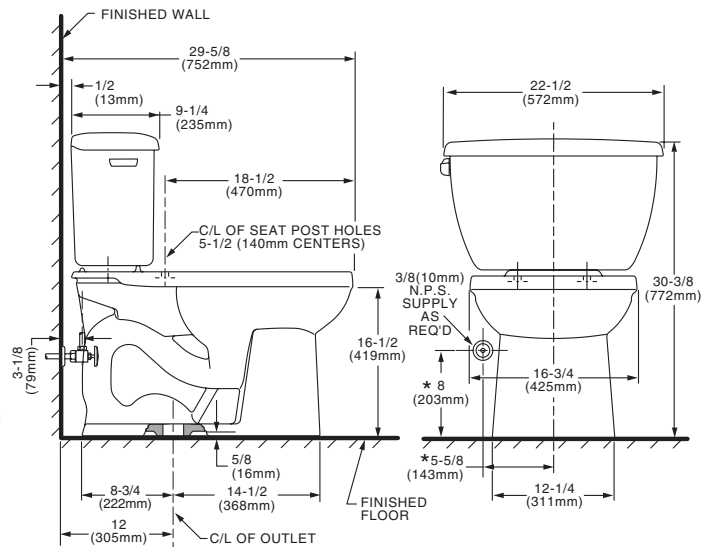
**Compliance Certifications -**

**Meets or Exceeds the Following Specifications:**

- ASME A112.19.2M for Vitreous China Fixtures- includes Flush performance, Ball Pass Diameter, Trap Seal Depth and all Dimensions

**To Be Specified:**

- Color:  White
- Supply with stop:



**NOTES:**

THIS TOILET IS DESIGNED TO ROUGH-IN AT A MINIMUM DIMENSION OF 305mm (12") FROM FINISHED WALL TO C/L OF OUTLET. SUPPLY NOT INCLUDED WITH FIXTURE AND MUST BE ORDERED SEPARATELY.  
\* DIMENSION SHOWN FOR LOCATION OF SUPPLY IS SUGGESTED.

**IMPORTANT:** Dimensions of fixtures are nominal and may vary within the range of tolerances established by ANSI Standard A112.19.2. These measurements are subject to change or cancellation. No responsibility is assumed for use of superseded or voided pages.



**MEETS THE AMERICANS WITH DISABILITIES ACT GUIDELINES AND ANSI A117.1 REQUIREMENTS FOR ACCESSIBLE AND USABLE BUILDING FACILITIES - CHECK LOCAL CODES.**