



Features

- WDI Pressure Assist Vessel
- High Performance 1.6 gpf / 6.0 lpf Flush
- Quieter Flushing Performance
- Large Water Surface Area
- Chrome Plated Trip Lever
- 2" [51mm] Fully Glazed Trapway
- 17-1/4" ADA EasyHeight Bowl
- Available in White, Biscuit and Bone Colors
- Limited Lifetime Warranty
- No Tank Sweating or Flapper Leaking



Model # Description

3840	Two-piece toilet combination, 17-1/4" [413mm] elongated front back outlet. Includes pressure assist vessel and trip lever, less toilet seat and supply.
3830	17-1/4" [413mm] ADA EasyHeight™ Elongated front back outlet, toilet bowl.
3612	Tank and cover only with left-hand trip lever.

Optional Tanks

3613	Same as 3612 with right hand trip lever
31615	Center push button tank
TP	Tamper proof locking lid (add "TP" to any tank model number)



31613 Right hand trip lever



31615 Center push button



Specifications

Water Pressure Range: 20 to 80 P.S.I.

Flush System: Pressure Assist Technology

Water Usage: 1.6 gpf / 6.0 lpf

Water Surface Area: 8-5/8" x 8-1/2"
[219mm x 216mm]

Trap Diameter: 2" [51mm]

Water Seal: 2-9/16" [65mm]

Shipping Cubes:

3830 Bowl: 3.3 cf

3612 Tank: 2.5 cf

Shipping Weight:

3830 Bowl: 55 lbs [25 kg]

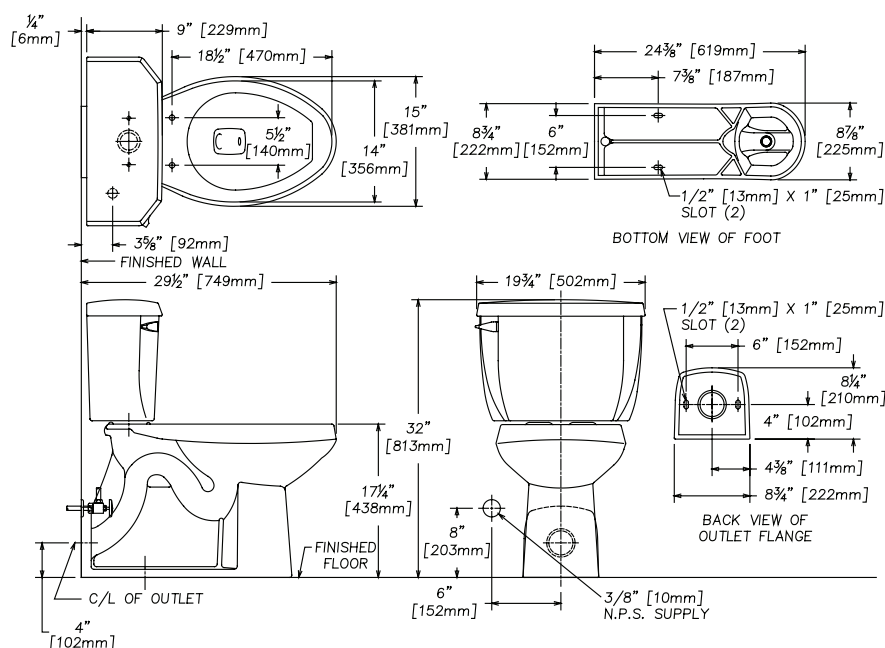
3612 Tank: 42 lbs [19 kg]

Warranty:

Vitreous China - Limited Lifetime

Vessel - Ten Year Limited

Parts - One Year Limited



IMPORTANT: These dimensions are nominal and may vary within the range of tolerances established by ASME Standard A 112.19.2

Features and Upgrades



B8106 Pressure assist vessel
High performance 1.6 gpf / 6.0 lpf flush.



P030391 Center push button
Available in Chrome, Polished Brass, Satin Nickel and Oil Rubbed Bronze



P030379 Right hand trip lever
Available in Chrome, Polished Brass, Satin Nickel and Oil Rubbed Bronze



P030378 Left hand trip lever
Available in Chrome, Polished Brass, Satin Nickel and Oil Rubbed Bronze



8080 Elongated "Lift 'N' Clean" toilet seat.
Seat components can be removed for easier cleaning.

Customer Service United States

41 Cairns Road

Mansfield, OH 44903

Phone: 800.877.6678

Fax: 419.525.3169

Email: customerservice@craneplumbing.com

Customer Service Canada

15 Crane Ave.

Stratford, ON N5A 6T3

Phone: 800.463.2726

Fax: 800.845.7158

Email: sales@craneplumbing.ca

www.craneplumbing.com

