



**Low Consumption
Water Closet Bowl**
Vitreous China

FEATURES

• **3327 Whirlton™**

Bowl: 3327 Whirlton™ (1.6 gpf / 6.0 lpf), regular rim, vitreous china, siphon action, whirlpool flush action, 1 1/2" top spud and bolt caps. Bowl can be roughed-in at 10" or 12".

Valve: * Flush valve with vacuum breaker, 1" angle screwdriver stop and flush connection. Suggested (1.6 gpf / 6.0 lpf) flush valves are:

Sloan "Royal"	#111
Delany "Flushboy"	F402-1.6
Zurn "Aquaflush"	Z-6000-WS-1

Supply:

Seat:

Color:

NOTES

- Fixture conforms to ANSI/ASME A112.19.2M standard.
- **For efficient operation of the bowl, a minimum flowing water pressure of 25 P.S.I. is required at the valve.
- Fully glazed trapway.

WATER ECONOMY FACTS

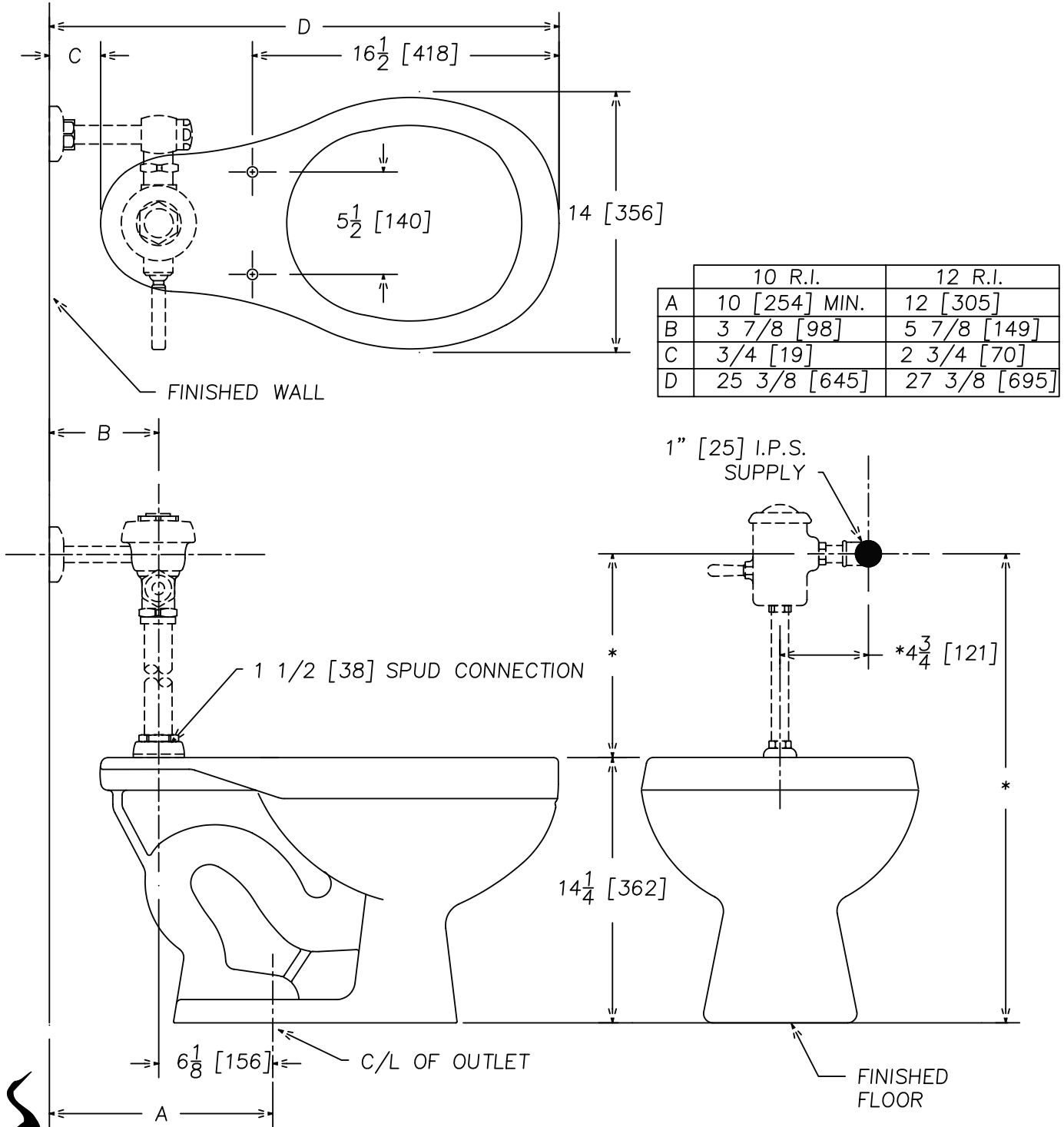
Average Gallons Per Flush	**25 PSI	50 PSI	80 PSI
3327 Regular Rim	1.50	1.60	1.58
Trapway.....	2"		
Water Surface.....	9" x 9 1/4"		
Water Seal.....	2 1/2"		



**CRANE
PLUMBING**
Universal-Rundle

* Not furnished by CR/PL, L.L.C. Description for specification purposes only.

10" or 12" Rough-In Low Consumption Bowl



NOTE: * VARIABLE-CHECK WITH MANUFACTURER OF FLUSH VALVE FOR PROPER ROUGHING-IN DIMENSIONS.

IMPORTANT: Roughing-in dimensions may vary 1/2" and are subject to change or cancellation without prior notice. No responsibility is assumed for use of superseded or voided leaflets.